



STOVE BEAMS & SHELVES

SOLID TIMBER OR NON-COMBUSTIBLE CAST BEAMS & SURROUNDS

Our focus is on providing you with a visually stunning product to accompany your stove

For over 35 years Focus Fireplaces has been at the forefront of design, innovation and manufacture within the fireplace industry. Our Mantel beams and associated products for stove installations are manufactured in the UK using premium, responsibly sourced timbers and materials in a purpose-built factory in York.

Our experienced and highly skilled team are dedicated to the delivery of excellence; from the finest quality products to the best possible customer service, we take pride in maintaining our market-leading reputation.

We have a policy of only selling our fireplace products through appointed retailers, installers and tradespeople to ensure that customers receive the best possible service, advice and technical assistance.

Visit our website www.focusfireplaces.co.uk to explore our full range of Fire Surrounds, Stove Surrounds, Mantel Beams and Electric Suites.



Proud to
design and
manufacture
in Great Britain



CONTENTS

01

FOCUSCAST COLLECTION

- 04 Why FocusCast
- 06 The Character Range
- 08 The Smooth Range
- 10 The York & Jorvik Range
- 12 The Vintage Range
- 13 The Portland Stone Beam
- 13 The Riva Decorative Beam

02

SOLID OAK BEAM COLLECTION

- 14 Why Solid Oak
- 16 Solid Oak Deep Beams
- 17 Solid Oak Large Beams
- 18 Solid Oak Fascia Beams
- 19 Solid Oak Shelves
- 20 Stove Surrounds
- 21 Corbels & Shelves

03

ACCESSORIES

- 22 Accessories
- 23 Beam Covers

NON-COMBUSTIBLE CAST BEAMS

Introducing FocusCast

THIS IS NOT WOOD...



MANTLE BEAMS



▲ Above
FocusCast Vintage shelf in a Honey Oak Finish

STOVE SURROUNDS



▲ Above
FocusCast Grantham in a Weathered Oak Finish

FocusCast Mantel Beams and Stove Surrounds are moulded from timber and stone beams using a high-density mineral composite material that can endure extreme exposure to heat and flames and will not ignite. This fire-resistance allows the FocusCast products to be positioned closer to a stove than a timber beam.

Highly realistic and featuring the qualities of real timber and stone beams, the FocusCast collection is hand-painted by our team of experts using a water-based paint system.



NON-COMBUSTIBLE



**EASY-FIX
INSTALL**



**FEATURE
LIGHTING**



**REALISTIC
DETAIL**



**MADE IN
BRITAIN**

5 BEAM SIZES

Upto 5 length options available (dependant on style/design)

54"
1371mm

51"
1295mm

48"
1220mm

42"
1067mm

36"
915mm



▲ Above
FocusCast Deep Beam in a Honey Oak Finish

6 RANGES

CHARACTER

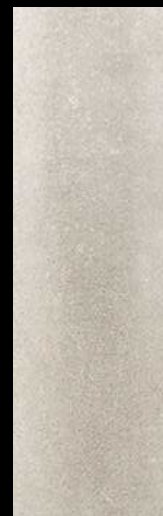
SMOOTH

YORK

VINTAGE

STONE

RIVA



5 COLOURS



PALE OAK



MID OAK



DARK OAK

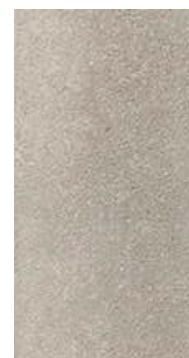


WEATHERED
OAK



HONEY
OAK

SPECIAL COLOURS



PORTLAND
STONE



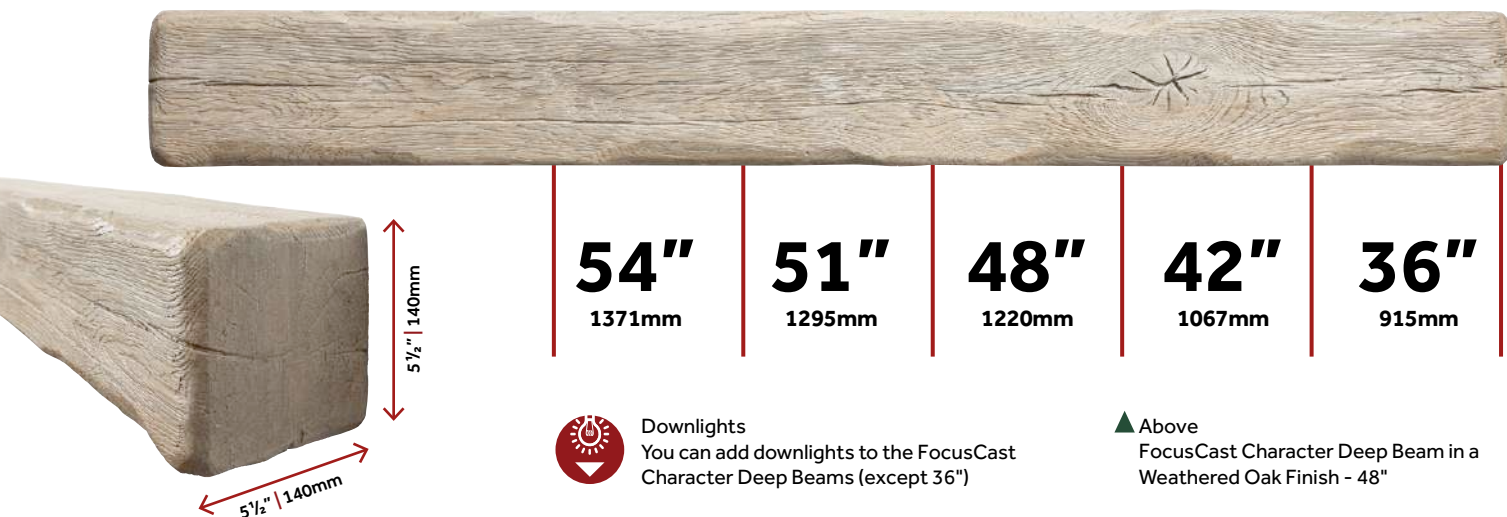
COLOUR
MATCH PAINT

FOCUSCAST NON-COMBUSTIBLE

THE CHARACTER RANGE

With distressed edges and a textured surface displaying the cracks, deep grain and knots of a characterful oak beam

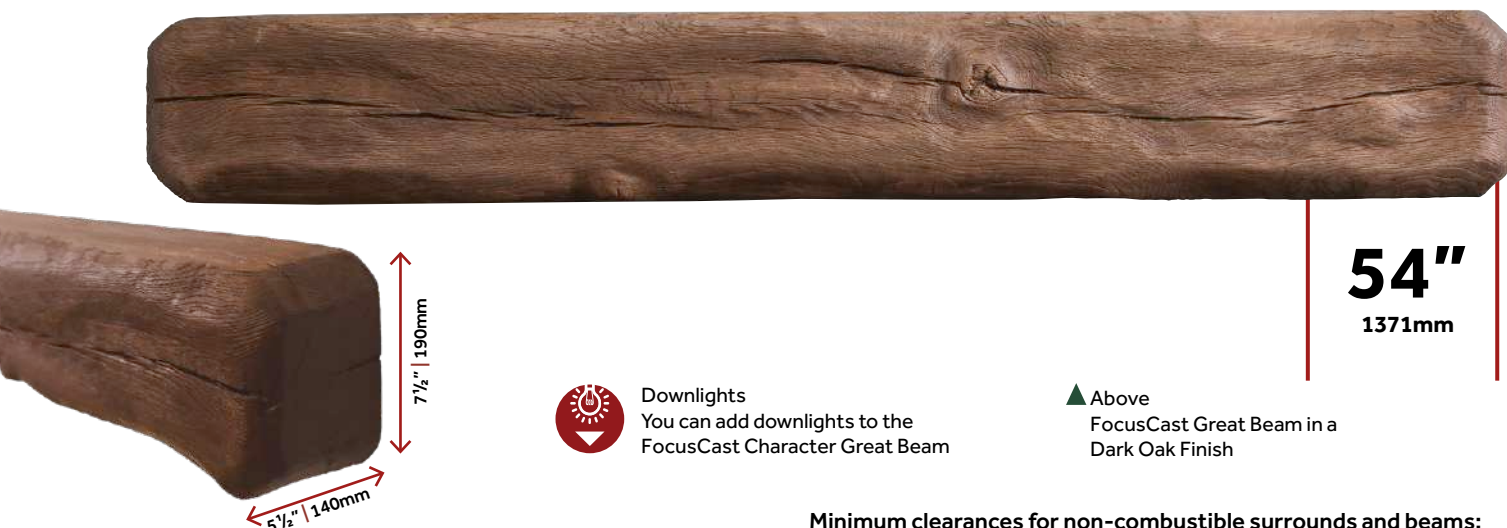
DEEP BEAM



STANDARD FASCIA BEAM



GREAT BEAM



Minimum clearances for non-combustible surrounds and beams:
250mm above the stove on a 5kw stove and 350mm on a 7kw stove.

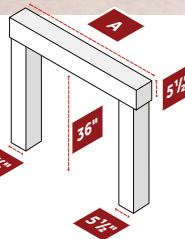


▲ Above
FocusCast Character Deep Beam in a Mid Oak Finish - 48"



**BEAMISH
STOVE SURROUND**

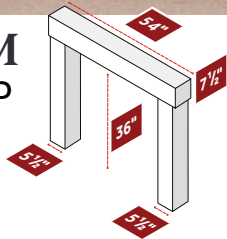
A Available with
54", 51", 48", 42" top beam



▲ Above FocusCast
Beamish in a
pale Oak Finish

**GRANTHAM
STOVE SURROUND**

Available with
54" top beam



▲ Above FocusCast
Grantham in a
Weathered Oak
Finish

AVAILABLE COLOURS



PALE OAK



MID OAK



DARK OAK



WEATHERED OAK





HONEY OAK

FOCUSCAST NON-COMBUSTIBLE


THE SMOOTH RANGE

Smooth straight edges and fine grain marks provide a modern aesthetic to the range of beams and surrounds.


DEEP BEAM



54" 1371mm	51" 1295mm	48" 1220mm	42" 1067mm
----------------------	----------------------	----------------------	----------------------



Downlights
You can add downlights to the FocusCast Smooth Deep Beams



Above
FocusCast Smooth Deep Beam in a Weathered Oak Finish - 48"

STANDARD FASCIA BEAM



48" 1220mm



Above
FocusCast Smooth Standard Fascia Beam in a Pale Oak Finish

AVAILABLE COLOURS



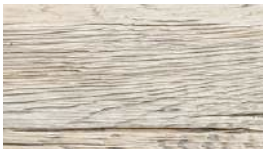
PALE OAK



MID OAK



DARK OAK



WEATHERED OAK



HONEY OAK

Minimum clearances for non-combustible surrounds and beams:
250mm above the stove on a 5kw stove and 350mm on a 7kw stove.



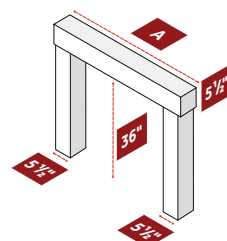
▲ ABOVE
FocusCast Deep Beam in a
Smooth Pale Oak Finish

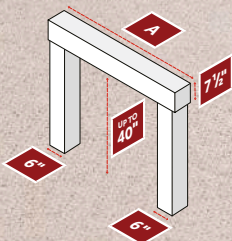


BARLBY STOVE SURROUND

A Available with
54", 51", 48", 42" top beam

◀ Left
FocusCast Barlby
in a Smooth Pale
Oak Finish





JORVIK STOVE SURROUND

A Available with 54", 48" top beam

The length of the Jorvik legs can be specified at the time of order (up to 40" max).

▲ ABOVE
FocusCast Jorvik Surround
in a Honey Oak Finish

FOCUSCAST NON-COMBUSTIBLE THE YORK BEAM & JORVIK SURROUND

An historic rafter has been utilised to craft an amazing large fascia beam and surround with incredibly detailed unique features.

YORK LARGE FASCIA BEAM



▲ Above
FocusCast York beam
in a Honey Oak Finish - 48"

AVAILABLE COLOURS



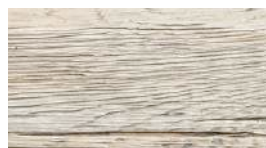
PALE OAK



MID OAK



BURNT OAK



WEATHERED OAK



HONEY OAK

► RIGHT
FocusCast York beam
in a Weathered Oak Finish



Minimum clearances for non-combustible surrounds and beams:
250mm above the stove on a 5kw stove and 350mm on a 7kw stove.

FOCUSCAST NON-COMBUSTIBLE

THE VINTAGE RANGE

Moulded from an authentic beam with real heritage, the Vintage beam and shelf are highly realistic.

VINTAGE BEAM



Above

Top: FocusCast Vintage Beam in a Dark Oak Finish - 54"

Bottom: FocusCast Vintage Beam in a Honey Oak Finish - 48"

VINTAGE SHELF



AVAILABLE COLOURS



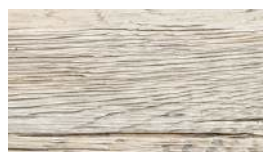
PALE OAK



MID OAK



DARK OAK



WEATHERED OAK



HONEY OAK



RIGHT

FocusCast Vintage shelf
in a Honey Oak Finish



Minimum clearances for non-combustible surrounds and beams:
250mm above the stove on a 5kw stove and 350mm on a 7kw stove.

FOCUSCAST NON-COMBUSTIBLE THE PORTLAND STONE BEAM

Moulded from a genuine stone beam for an authentic appearance.



54"
1371mm

48"
1220mm

► Above & Left
FocusCast The Portland Stone Beam

THE RIVA DECORATIVE BEAM



54"
1371mm

48"
1220mm

A new decorative beam that features fine timber detailing in a stylised ribbed design.



► Above & Left
FocusCast Riva
finished in a
Parchment paint

Riva can be
finished in
bespoke paints
to match your
decor or any of
the Oak colours.



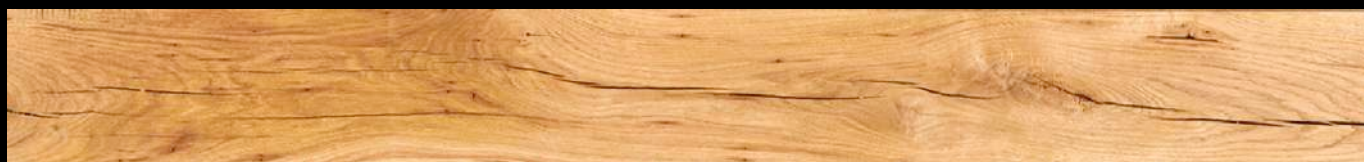


The beauty of SOLID OAK

The majesty of a solid oak beam above a roaring stove is an image that many of us visualise when we imagine a warm, cosy room.

With unique natural features, each beam and shelf is truly one of a kind and can be shaped and coloured to suit your own personal tastes. We only use Sustainably sourced timber which is dried in the best possible way to provide the greatest stability in use.

ANY SIZES UP TO 3M



54"
1371mm

48"
1220mm

42"
1067mm

42", 48" and 54" are standard sizes, but Beams and Shelves can be supplied at any length upto 3m

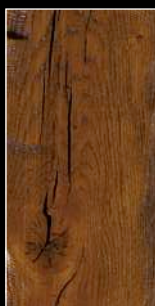
7 COLOURS



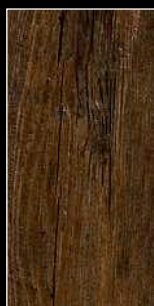
NATURAL
WAXED OAK



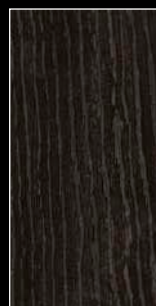
LIGHT/
MEDIUM OAK



MEDIUM
OAK



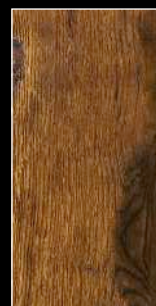
MEDIUM/
DARK OAK



EBONY
ON OAK



SILVERED
OAK



WARM
ANTIQUE

OPTIONS



ADD PEGS
(OPTION)



ADD INDENTS
(OPTION)



SLOW ARCH
(OPTION on
standard & large
fascia beams)



EASY FIT
BRACKET
(SEE P22)



ADD
DOWNLIGHTS
(OPTION on hollow
beams & shelves)

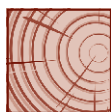
PROFILES TO CHOOSE FROM

Not available in Prime Timber

DEEP BEAM

5½ x 5½"

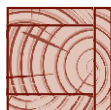
140 x 140mm



HOLLOW DEEP BEAM

5½ x 5½"

140 x 140mm

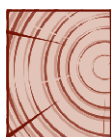


Not available in Prime Timber

GREAT BEAM

7½ x 5½"

190 x 140mm



LARGE HOLLOW BEAM

9 x 7"

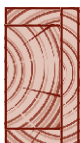
229 x 140mm



HOLLOW BEAM

7 x 4"

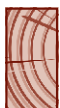
178 x 102mm



STANDARD FASCIA BEAM

5½ x 2¾"

140 x 70mm



MEDIUM FASCIA BEAM

5½ x 3½"

140 x 89mm



LARGE FASCIA BEAM

7½ x 2¾"

190 x 70mm



STANDARD SHELF

2¾ x 5½"

140 x 70mm



LARGE SHELF

2¾ x 7½"

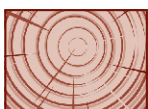
140 x 190mm



GREAT SHELF

5½ x 7½"

70 x 190mm

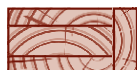


Not available in Prime Timber

HOLLOW SHELF

4 x 7"

102 x 178mm



SURFACE TEXTURE & AGEING

ROUND EDGE

Round edges.
Smooth surface



RUSTIC

Nibbled edges.
Smooth surface



DRESSED

Heavily contoured.
Smooth surface



AGED

Distressed edges.
Textured surface



EXTREMELY AGED

Distressed edges and faces.
Textured surface



ANCIENT

Looks very old



PRIME

Prime timber is an option on all products except Great Beams, Great Shelves and Deep Beams. It is normally supplied with round edges.

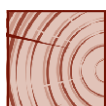


There are Regulations that specify the minimum distance that a beam /shelf must be above the stove. These measurements vary depending on the type and heat output of the selected stove. Please refer to your stockist/installer for further information.

SOLID OAK DEEP BEAMS

2 PROFILES

Deep Beam



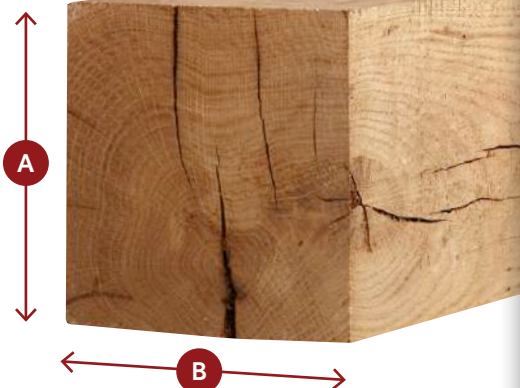
A - 5½ (140 mm)

X

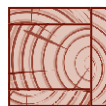
B - 5½ (140 mm)

Deep Beams are cut from the heart of the oak log and therefore reveal lots of character including knots, splits and shakes. Every beam is unique. Skillful workmanship further enhances the beam with progressive levels of ageing (Round Edge, Rustic, Dressed, Aged, Extremely Aged or even Ancient). Each beam is then beautifully finished with your choice of colour.

Deep Beams are not available in Prime Timber



Hollow Deep Beam

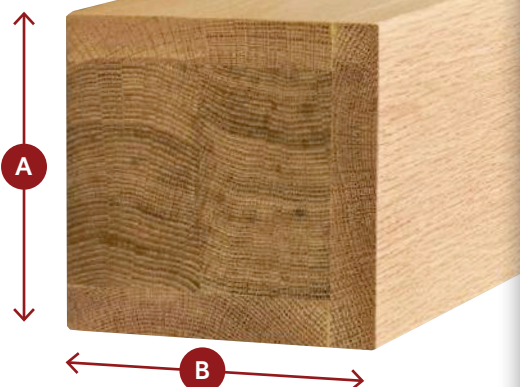


A - 5½ (140mm)

X

B - 5½ (140mm)

Hollow Beams are fabricated to give the appearance of a Solid Beam. Their lighter construction is ideal where weight is an issue. They can be made to any size up to 3m. Hollow Beams are not available as Dressed, Extremely Aged or Ancient Oak.



BELOW ▼

Deep Beam: Ancient Oak in a Light/Medium Finish



SURFACE TEXTURE & AGEING



ROUND EDGE

Round edges. Smooth surface



RUSTIC

Nibbled edges. Smooth surface



DRESSED

Heavily contoured. Smooth surface



AGED

Distressed edges. Textured surface



EXTREMELY AGED

Distressed edges and faces.
Textured surface



ANCIENT

Looks very old



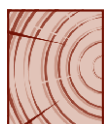
PRIME

Prime timber is an option on all products except Great Beams, Great Shelves and Deep Beams. It is normally supplied with round edges.

SOLID OAK LARGE BEAMS

3 PROFILES

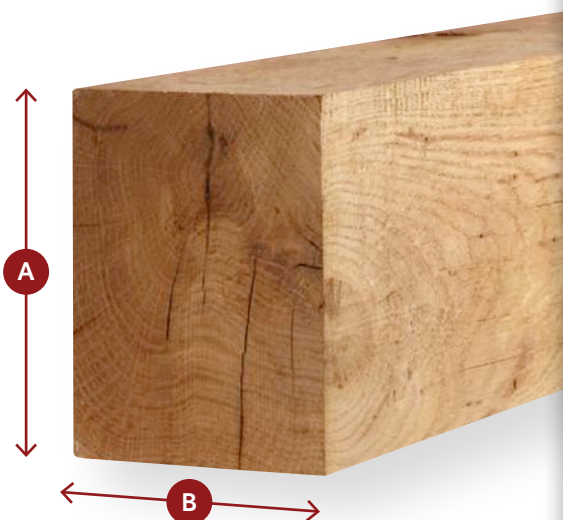
Great Beam



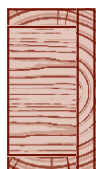
A - 7½ (190mm)
X
B - 5½ (140mm)

Great Beams are cut from the heart of the oak log and therefore reveal lots of character including knots, splits and shakes. Every beam is unique. Skilful workmanship further enhances the beam with progressive levels of ageing (Round Edge, Rustic, Dressed, Aged, Extremely Aged or even Ancient). Each beam is then beautifully finished with your choice of colour.

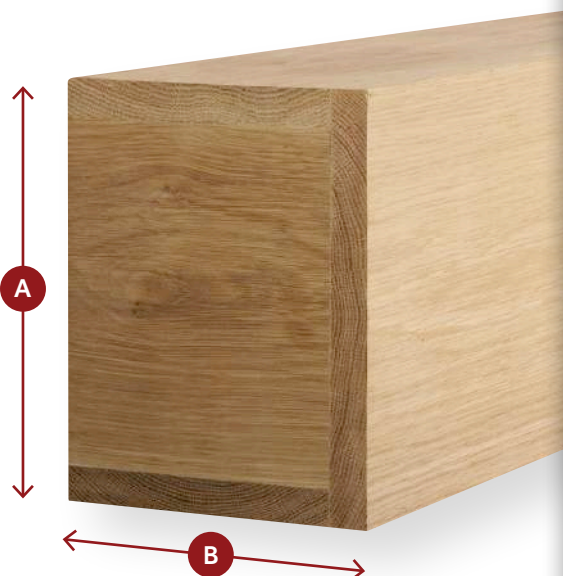
Great Beams are not available in Prime Timber



Large Hollow Beam



A - 9 (229mm)
X
B - 7 (178mm)



Hollow Beam



A - 7 (178mm)
X
B - 4 (140mm)

Hollow Beams are fabricated to give the appearance of a Solid Beam. Their lighter construction is ideal where weight is an issue. They can be made to any size up to 3m. Hollow Beams are not available as Dressed, Extremely Aged or Ancient Oak.



7 COLOURS



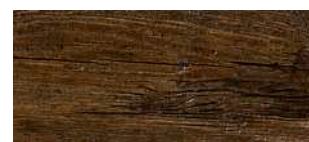
NATURAL WAXED OAK



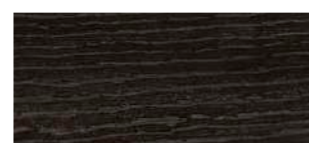
LIGHT/MEDIUM OAK



MEDIUM OAK



MEDIUM/DARK OAK



EBONY ON OAK



SILVERED OAK



WARM ANTIQUE

EASY-FIX



The Focus Easy-fix system is a substantial bracket designed to simplify the fitting of the heavier beams and shelves. It comes supplied with plugs and screws.

Once the beam is in place, it is easily secured from underneath with a few turns of an Allen Key.

Note: All beams (except Prime) feature knots, splits and shakes.

SOLID OAK FASCIA BEAMS

3 PROFILES

Standard Fascia Beam



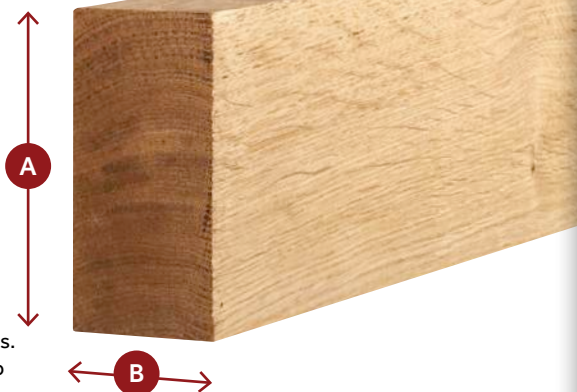
A - 5½ (140mm)

X

B - 2¾ (70mm)

Standard Fascia are cut from the heart of the oak log and therefore reveal lots of character including knots, splits and shakes. Every beam is unique. Skillful workmanship further enhances the beam with progressive levels of ageing (Round Edge, Rustic, Dressed, Aged, Extremely Aged or even Ancient). Each beam is then beautifully finished with your choice of colour.

Deep Beams are not available in Prime Timber



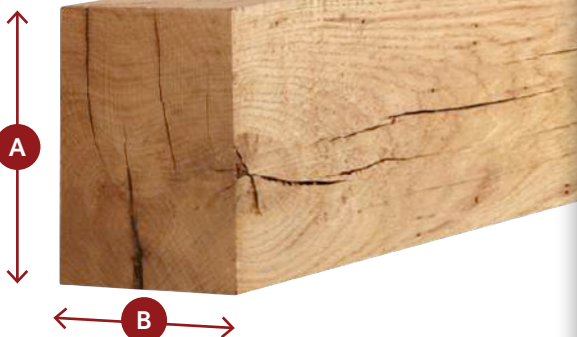
Medium Fascia Beam



A - 5½ (140mm)

X

B - 3½ (89mm)



Large Fascia Beam



A - 7½ (140 mm)

X

B - 2¾ (140 mm)



SURFACE TEXTURE & AGEING



ROUND EDGE

Round edges. Smooth surface



RUSTIC

Nibbled edges. Smooth surface



DRESSED

Heavily contoured. Smooth surface



AGED

Distressed edges. Textured surface



EXTREMELY AGED

Distressed edges and faces.
Textured surface



ANCIENT

Looks very old



PRIME

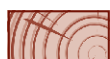
Prime timber is an option on all products except Great Beams, Great Shelves and Deep Beams. It is normally supplied with round edges.

Note: All beams (except Prime) feature knots, splits and shakes.

SOLID OAK SHELVES

4 PROFILES

Standard Shelf



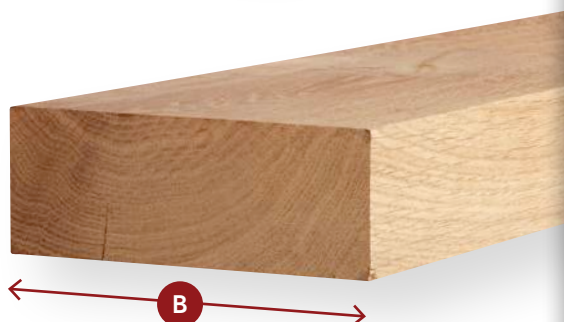
A - $2\frac{3}{4}$ (70mm)
X
B - $5\frac{1}{2}$ (140mm)



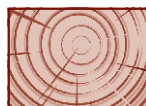
Large Shelf



A - $2\frac{3}{4}$ (70mm)
X
B - $7\frac{1}{2}$ (190mm)



Great Shelf

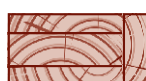


A - $5\frac{1}{2}$ (140mm)
X
B - $7\frac{1}{2}$ (190mm)



Not available in Prime Timber

Hollow Shelf



A - 4 (140mm)
X
B - 7 (178mm)



Note: All beams (except Prime) feature knots, splits and shakes.

7 COLOURS



NATURAL WAXED OAK



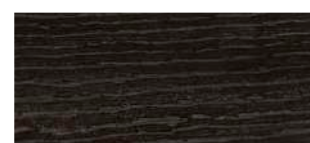
LIGHT/MEDIUM OAK



MEDIUM OAK



MEDIUM/DARK OAK



EBONY ON OAK



SILVERED OAK



WARM ANTIQUE

EASY-FIX



The Focus Easy-fix system is a substantial bracket designed to simplify the fitting of the heavier beams and shelves. It comes supplied with plugs and screws.

Once the beam is in place, it is easily secured from underneath with a few turns of an Allen Key.

SOLID OAK & PAINTED STOVE SURROUNDS



SOLID OAK CORBELS

Choose from Five different styles to complement your solid oak beam



Fluted



Infinity



Boulder



Decorative



Traditional

SOLID OAK SHELVES

These attractive shelves will enhance any stove installation and can be ordered in a wide variety of timbers and finishes. As every one is hand-made they can be manufactured to your specific size and colour



Corby Shelf: Antique White with Prime Oak Mantel in a Natural Waxed Finish



Plain Corbel Shelf: Standard Waxed Pine



Canterbury Shelf: Waxed Oak



Mallaig Shelf: Waxed Oak

FIXING SYSTEMS

FOCUS EASY-FIX



Nothing can be easier than an Easy-fix!!

The Focus Easy-fix system is a substantial bracket designed to simplify the fitting of the heavier beams and shelves. It comes supplied with plugs and screws.

Once the beam is in place, it is easily secured from underneath with a few turns of an Allen Key.



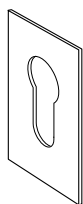
Focus Easy-fix Brackets - 950mm

If the Easy-fix system is not specified: we supply three M10 x 300mm threaded metal bars that screw into pre-drilled holes in the back of the beam. Consult with your Installer for more information.



FIXING SYSTEMS

FOR FASCIA BEAMS & PANELS



Fascia Beams and Fascia Panels are supplied with two metal plate keyholes inserted in the back. These come complete with plugs and screws



Alternatively there is an 850mm Easy-fix system designed for Fascia Beams. (We recommend discussing fixings with your installer).

HEAT SHIELDS

FOR SOLID OAK DEEP BEAMS & GREAT BEAMS



AVAILABLE LENGTHS:
36 x 4" & 36 x 6"



BLACK



BROWN



GOLD

DECORATIVE CORNER TRIMS



A neat, effective way to make a clean edge to your chamber

AVAILABLE LENGTH:
40" x 2" x 2"



SOLID OAK BEAM COVERS



▲ Above
Beam Cover and Spars in Rustic Oak in a Light/Medium Finish

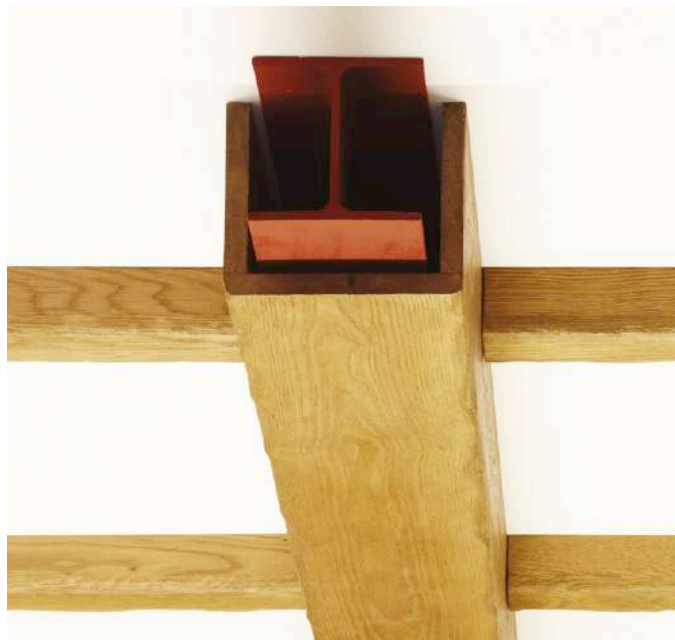
LOG CABINET



All Oak or Steel Grey with
a Light Oak Top

Create a superb ambience in your room with our authentic timber beams.

They are ideal where a steel beam needs to be covered as they can be made to almost any length and dimension and finished to match your fireplace.





FOCUS FIREPLACES LIMITED

Unit 27 The Bull Commercial Centre, Stockton-on-Forest, York YO32 9LE

Tel: 01904 400109

email: sales@focusfireplaces.co.uk

www.focusfireplaces.co.uk



Focus Fireplaces are continually updating and improving their products. We reserve the right to alter designs, dimensions and specifications of our products without notice.

All sizes are approximate. Brochure colours may vary from the actual product due to the photographic and printing processes and the variations in finishing.

© Focus Fireplaces Manufacturing 2024 - Issue 0124